



# Epson PowerLite® 830p and 835p

Two ultimate solutions for high-performance presentations.

Two clearly remarkable solutions for high-performance presentations in virtually any setting, the Epson PowerLite 830p and 835p offer astounding quality and flexibility. Each model includes three Epson LCDs, which work together with 3000 ANSI lumens and XGA resolution to give you accurate color, superior color saturation, and exceptional image quality. And, each delivers great video quality as well.

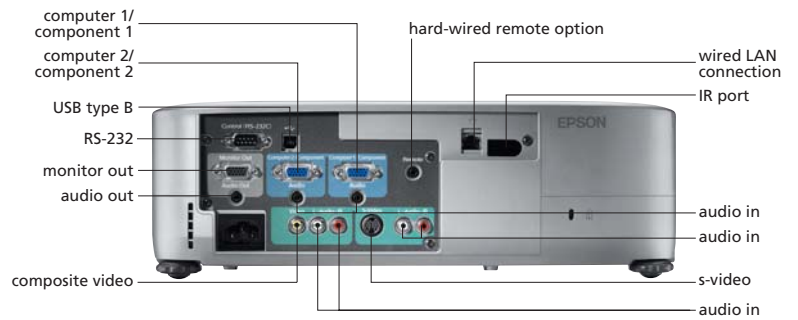
A whisper-quiet performer, the PowerLite 830p provides convenient automatic setup, which intuitively sets the focus and image size at the touch of a button—all in just seconds. And, with four input connections, and dedicated audio for each, it's easily adaptable to any situation. A power focus and ultra wide 1.6x zoom ensure easy setup for both ceiling-mounted and desktop presentations. Use the wired LAN connection to attach to a network, and you can remotely monitor and control installed projectors. It's the perfect way to manage your projector assets.

Should you choose to go wireless, the PowerLite 835p offers the ideal solution. Along with all of the great features it shares with the PowerLite 830p, this model also offers high-speed wireless performance with 802.11g Wi-Fi® capabilities. Epson's superior processing enables the projector to deliver fast transfer speeds for viewing MPEG2 videos and PowerPoint® presentations. And, advanced security features offer WEP, WPA, and LEAP compatibility. There's even a USB and PCMCIA input connection, so you can not only project your presentation without a computer, but digital photos and video as well.

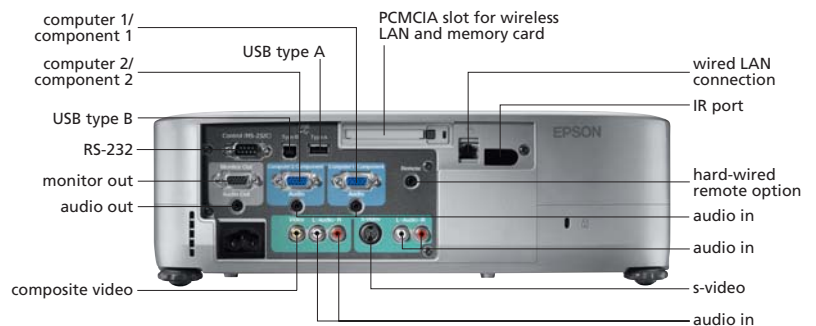
Powerful, and incredibly versatile, these full-featured projectors deliver consistently brilliant results from the boardroom to large lecture halls. The choice is up to you!



Front view



Back view PowerLite 830p



Back view PowerLite 835p

For perfect presentations anytime, anywhere

KEY FEATURES

**Ultra bright 3000 ANSI lumens for presentations in any setting**

- Robust feature set that's great for the boardroom or lecture hall

**Superior image quality and performance**

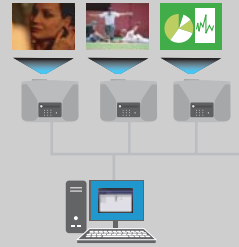
- Three Epson LCDs for greater color depth and color accuracy across the screen
- XGA (1024 x 768) resolution for vibrant images with precision color and detail



**Wired and wireless local networking capabilities**

**Epson EasyManagement™**

- A LAN connection to remotely monitor and control projectors over the network!
  - Centralized monitoring and control
  - Built-in remote access
  - Simple Network Management Protocol (SNMP) for easy network management and maintenance
  - E-mail notification (via SMTP) to alert network administrator(s) to issues related to temperature, fan and lamp status



**Epson EasyMP™ (PowerLite 835p\* only)**

- Wireless presentations to project images in real-time; displayed on up to 4 projectors simultaneously!
  - 802.11g and Epson's original algorithm ensure the fastest transfer speeds for streaming MPEG2 videos and real-time PowerPoint presentations
  - Broadest security protection—WEP, WPA, and LEAP compatibility to safeguard the display screen and ensure uninterrupted presentations
  - Web control over multiple network projectors, each with a different router address
- PC-free presentations to connect a memory device and start your presentation—all without a PC



USB memory

PC card

- USB or PCMCIA connectivity to view MPEG movies and digital photos
- Improved transfer speeds for PowerPoint animations that consistently outperform the competition
- Broadest file format compatibility (JPEG, GIF, BMP and PNG)

\*Epson PowerLite 835p comes standard with an Epson wireless 802.11g/b Wi-Fi card.

### Easy setup, installation, and operation

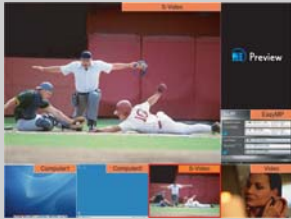
- Power focus, plus an ultra wide 1.6x optical zoom—for the greatest positioning flexibility
- Quick Setup function with an auto sensing feature which intuitively sets up the appropriate screen size, keystone, and focus at the touch of a button



- Search function that automatically displays the connected input source(s), and switches instantly between them
- WallShot feature with automatic color correction for projecting images on a colored surface



- Automatic digital keystone correction engages without manual adjustments (+/-45° vertical, +/-20° horizontal)
- Preview function—no need to check one source at a time (View all inputs sources and choose the one you desire!)



- Picture-in-Picture function to view more than one input source at a time
- Direct Power On and Power Off—turn on or turn off the projector with one system switch
- Monitor out capability to display images on a monitor and screen simultaneously
- Password-protected security feature, plus operation lock, to protect against unauthorized usage

### Quiet and unobtrusive

- Whisper-quiet operation (as low as 28db) so the presentation is the center of attention
- Cooling fan located in front for a comfortable viewing experience
- Conveniently placed lamp and air filter access (on top of the projector), designed for easy changes, even when the projector is ceiling mounted

### Great audio and connectivity

- Powerful 5W audio so there's no additional audio expense
- Audio out (audio follow-through)
- No costly expansion modules needed; two computer and two video inputs with dedicated audio for each

### State-of-the-art video performance

- Great video quality with 3D Y/C separation and motion compensated Interlace-Progressive conversion
- Two video inputs, for composite, component, and S-video compatibility
- HDTV-ready; supports 480i, 480p, 720p, and 1080i formats

### Outstanding Epson service and support (free for the duration of the two-year warranty)

- 90-day bulb warranty for added dependability
- Epson Road Service program provides a replacement projector, typically within 24 hours
- Epson PrivateLine™ dedicated toll-free support line available from 6 a.m. to 6 p.m. PST Monday - Friday (Calls are answered live, typically in about a minute.)
- International warranty in over 45 countries, offered by Epson



# Epson PowerLite 830p and 835p Specifications

<b>Projection System</b>	Epson original LCD technology
<b>Projection Method</b>	Front/rear/ceiling mount
<b>LCD</b>	
Driving method	Epson High Temperature Poly-Silicon TFT
Pixel number	786,432 dots x 3 (1024 x 768) LCDs
Native resolution	XGA
Aspect ratio	4:3 (supports 16:9, 5:4)
Pixel arrangement	Stripe
<b>Projection Lens</b>	
Type	Power: zoom / focus
F-number	1.75 – 2.42
f-number	24 – 38.2mm
Zoom ratio	1.0:1.6
<b>Lamp</b>	
Type	200W UHE
Life*	2000H (High Brightness), 3000H (Low Brightness)
<b>Screen Width Ratio</b> (Distance/Width)	1.46 to 2.39:1
<b>Screen Size</b> (Projected distance)	30" to 300" (2.9' to 34.4')
<b>Keystone Correction</b>	Vertical: +/-45°, Horizontal: +/-25° Auto Keystone Correction: Vertical: +/-40°, Horizontal: +/-20°
<b>Brightness</b> (Typical)	3000 ANSI lumens (High Brightness) 2200 ANSI lumens (Low Brightness)
<b>Contrast Ratio</b>	600:1
<b>Brightness Uniformity</b> (Typical)	90%
<b>Color Reproduction</b>	24 bit; 16.7ml
<b>Audio Output</b>	5W Monaural
<b>Operating Temperature</b>	41°F to 95°F (5°C to 35°C)
<b>Power Supply Voltage</b>	100-240VAC +/-10%, 50/60Hz
<b>Power Consumption</b>	300W, 38W Network On at sleep mode 1W Network Off at sleep mode
<b>Dimensions</b>	11" x 14.4" x 4.5"
<b>Weight</b>	10.4lb/4.7kg
<b>Fan Noise</b>	34db (High Brightness) 28db (Low Brightness)
<b>Effective Scanning Frequency Range</b>	
Pixel clock	13.5MHz to 230MHz
Horizontal	15KHz to 107KHz
Vertical	50Hz to 120Hz
<b>Remote Control</b>	
Features	Focus, zoom, keystone, source selection, power, page up/page down, color mode, volume, e-zoom, a/v mute, freeze, resize, menu, help, auto, pointer, preview, WallShot, PinP, EasyMP (PowerLite 835p only)
Operating angle	Right/Left +/- 30 degrees Upper/Lower +/- 15 degrees
Operating distance	33ft (10m)
<b>RGB</b>	
	Analog RGB I/O
Display performance	
Native	1024 x 768
Resize	1600 x 1200, 1280 x 1024, 800 x 600, 640 x 480
Input terminal	
Video	Mini D-sub 15 pin x 2
Audio	Stereo mini jack x 2
Output terminal	
Video	Mini D-sub 15pin (monitor out)
Audio	Stereo mini-jack

\*Lamp life results will vary depending upon mode selected, environmental conditions, and usage.

<b>Video I/O</b>	
Display performance	NTSC: 560 lines PAL: 560 lines (Depends on observation of the multi burst pattern)
Input signal	NTSC, NTSC4.43, PAL, M-PAL, N-PAL, PAL60, SECAM HDTV: 480i, 480p, 720p, 1080i
Input terminal	
Video	Composite Video: RCA(Yellow) x 1; S-video: Mini DIN; Component Video: Mini D-sub 15pin (in common with Analog RGB connector); Video-RGB: Mini D-sub 15pin (in common with Analog RGB connector)
Audio	RCA x 2
Audio signal	500m Vrms/47Kohm

<b>Control I/O</b>	
I/O terminal	
PowerLite 830p	USB connector series B x 1 (for mouse)
PowerLite 835p	USB connector series B x 1 (for mouse) USB connector series A x 1 (for EasyMP) Serial: Mini D-sub 9 pin x 1, RS-232C
PCMCIA card slot	
PowerLite 835p	Type II x 1 (for wireless LAN card/storage card)
Network interface	
PowerLite 830p	RJ45 x 1 (for wired Network Control Only)
PowerLite 835p	RJ45 x 1 (for wired Network Control and presentation viewing)
<b>Security</b>	
	Kensington®-style lock provision

**Warranty**  
Two-year limited warranty, 2-year international warranty, 90-day lamp warranty, Epson Road Service Program and Epson PrivateLine® dedicated toll-free support (U.S. and Canada only)

**Supplied Accessories**  
Power cable, remote control with battery, computer cable, audio adapter cable, USB A/USB B Cable, wireless 802.11g/b LAN card (PowerLite 835p only), Epson projector software CD-Rom (PowerLite 830p only), EasyMP Software CD-Rom (PowerLite 835p only), Start Here Kit

<b>Product/Accessory Part Numbers</b>	
Epson PowerLite 830p projector	V11H146020
Epson PowerLite 835p projector	V11H145020
Replacement lamp	V13H010L31
Air filter set	V13H134A07
Samsonite wheeled soft case	ELPK535
ATA molded hardshell case	ELPK552
ATA shipping case	ELPK553
Ceiling mount	ELPMB36
Suspension adapter	ELPMBAPL
False ceiling plate	ELPMBFCP
Security bracket/cablings for gyro lock mounts	ELPMBSEC
Adjustable ceiling channel	ELPMBACC
Remote control cable set	V12H005C28
Component video cable	ELPKC19
S-Video cable	ELPSV01
Distribution amplifier	ELPDA01
Mac adapter set	ELPAP01
50" portable screen	ELPSC06
60" portable pop-up screen	ELPSC07
80" portable pop-up screen	ELPSC08
83.6" hanging pull-down screen	ELPSC09
High-Resolution Document Imager (ELPDC05)	V12H162020
High-Resolution Document Camera (ELPDC04)	V12H064020
Kensington security lock	ELPSL01

**Support—The Epson Connection<sup>SM</sup>**  
Pre-Sales Support U.S. and Canada 800-463-7766  
Automated Technical Support 800-922-8911  
Internet Web Site [www.epson.com](http://www.epson.com)

**Presenters ONLINE** [presentersonline.com](http://presentersonline.com)

## EPSON®

**Epson America, Inc.**

3840 Kilroy Airport Way, Long Beach, CA 90806

**Epson Canada, Ltd.**

3771 Victoria Park Avenue, Toronto, Ontario M1W 3Z5

Specifications and terms are subject to change without notice. Epson is a registered trademark and EasyManagement, EasyMP and 3 LCD are trademarks of Seiko Epson Corporation. PowerLite is a registered trademark, and Epson Connection, PrivateLine and Presenters Online are service marks of Epson America, Inc. All other product and brand names are trademarks and/or registered trademarks of their respective companies. Epson disclaims any and all rights in these marks. © Copyright 2004 Epson America, Inc. CPD-18145R2 9/04 10K WP